

# 5-Step Program for Healthier-Skin with Pets



## Choose From 3 Economical Kits



### **Healthy-Skin Kit Mini**

Recommended for Daily Use with  
"Small Pets and Companion Pets".



### **Healthy-Skin Kit Small**

Recommended for Daily Use with  
"Most Pets from 10 to 60 lbs.".



### **Healthy-Skin Kit Large**

Recommended for Daily Use with  
"Large Pets/Multiple Pet Families".

**Nzymes**  
.com<sup>®</sup>  
**Natural Products, Real Results!**

NZYMES.COM - A Division. of Biopet Inc  
8298 Arville St. Suite 103 • Las Vegas, NV 89139  
Local Ph: (702) 228-0097 • Toll Free: (877) 816-6500 • Email: [info@nzymes.com](mailto:info@nzymes.com)

# What is Yeast Overgrowth?

The symptoms of a systemic yeast infection in pets are obvious: itchy or blackened skin, hot spots, strange odor, ear infections and raw paws. But what exactly is a systemic yeast infection?

Simply put, a systemic Yeast Infection in pets is caused by an imbalance in the GI (gastro-intestinal) tract - the gut. In the gut, there are billions of beneficial bacterial flora colonies, and there are also fungal residents such as yeast. When all is well, each produces by-products that benefit the other. However, when something comes along to upset that balance, this is when troubles begin.

The purpose of the good bacteria is to coat the lining of the GI tract, creating a protective barrier and aiding in the digestive process. This helps insure a strong, sound immune system. Unfortunately, there are many things that disrupt this good bacteria from doing its job well. These things include the use (and overuse) of antibiotics, preservatives, additives and colorings in our pet's food, the use of flea, tick and heartworm preventatives and drinking chlorinated water. Stress can also be a contributor.

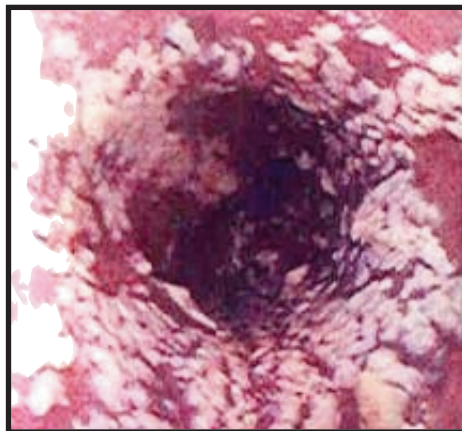
Any or all of these factors can cause the protective flora within the gut to diminish. As this protective barrier fades, the always opportunistic yeast will begin to expand and take over those spaces formerly occupied by the friendly bacteria.

This is what is known as a yeast overgrowth. In time, the by-products created by the yeast overwhelm the local environment, and are carried by the bloodstream to the surface for filtration. These toxins then exit through the paths of least resistance; primarily the skin cells, but also the ears, eyes, feet and genital areas. The problem is already a deeply entrenched by the time you notice the itchy or blackening skin, hair loss, hot spots or reoccurring ear infections.

These symptoms are often diagnosed as allergies. They are commonly treated with antibiotics or steroids, which further weaken the immune system and only suppress the symptoms, without changing with the internal problem at all. But allergies is a diagnosis that seems makes sense based on the visual surface symptoms.

## The Reasons for an 'Allergy' Diagnosis

Once the protective flora of the gut has been eroded, inflammation begins to take place as the yeast takes control. This causes the cells of the intestinal lining to become enlarged and porous allowing the passage of undigested material into the



body or bloodstream. This leakage of bits of undigested matter internally forces an immune response which can result in a false positive allergy result during testing.

Instead of allergies, this condition is actually referred to as '**Leaky Gut Syndrome**'. Left alone this condition will worsen as yeast expands and more toxins are released into the body and bloodstream.

## What Makes it Worse?

As mentioned above, common food ingredients and medications are the big offenders. Let's start with your pet's food. Yeast is a hungry organism, thriving on sugars and starches.

Start by checking the ingredient list of the pet food. Wheat flour or gluten, White rice, corn meal, potatoes (the worst), sweet potatoes and tapioca should always be avoided as a primary ingredient in your pet's food (especially if you suspect a yeast problem).

Primary ingredients are the ones listed first in the paragraph of ingredients on the back or side of your pet food bag, treats or can. Ingredients, like corn and potatoes, white rice, etc., are **simple starches**. The simpler the starch, the more quickly it coverts to sugar in the body, which feeds the yeast allowing it to grow further.

## Medications

Medications like antibiotics, steroids, antihistamines or other immune suppressants can further damage the protective flora of the gut paving the way for further yeast expansion. These drugs may suppress symptoms temporarily, but in the long term the overall condition is being made worse.

## Strong Immunity Means Good Health

Think of the immune system like a muscle. When it's working, being used and being nourished, it grows stronger. If it's shut down, it grows weaker.

The **Nzymes Healthy Skin Program** is all about the strengthening of the immune system through balanced nutrition. This approach has a long record of success and is truly focused on getting at the root of the problem, building the pet's immune system from the inside out, not just suppressing symptoms for years with no recovery.

**TO BEAT THE YEAST SIMPLY FOLLOW THE NZYMES®  
HEALTHY-SKIN PROGRAM**



# Identify the Products in Your Healthy Skin Kit

*Each Healthy Skin Kit Includes A Primary NZYMES® Product*

*The NZYMES® Antioxidant Treats or Sprouted Granules add the “live” SUPERFOOD component to your pet’s diet. These naturally assist the body with the take-up nutrients in the pet’s food more effectively. They also help to cleanse toxins, ease inflammation promote a healthier digestive balance and stronger immune functions. Plus they naturally promote good skin and coat.*

## Healthy-Skin Kit Mini

*Includes the One Pound Bottle of NZYMES® Sprouted Granules*



*Recommended for Daily Use with “Small Pets and Companion Pets”.*

## Healthy-Skin Kit Small

*Includes 3 Bottles of NZYMES® Antioxidant Treats*



*Recommended for Daily Use with “Most Pets from 10 to 60 lbs.”.*

## Healthy-Skin Kit Large

*Includes the Two Pound Bottle of NZYMES® Sprouted Granules*



*Recommended for Daily Use with “Large Pets/Multiple Pet Families”.*

*Each Healthy-Skin Kit Also Includes One Each of these Products*



**NZYMES® Ox-E-Drops Concentrate 2.2 oz.**  
**NZYMES® Ox-E Topical Spray Solution 4 oz.**

*Ox-E-Drops Concentrate is used internally and mixed with food and water to help promote a pH balanced digestive tract in the battle with Leaky Gut Syndrome and yeast overgrowth. It mixes with water in a spray bottle to make a 2% Topical Solution to be applied to all the affected areas of the body 3 to 4 times daily.*

**Added daily to each Meal and water.**  
**Mixed with water for topical needs.**



**Includes One 2.2 Oz. Bottle of NZYMES® Tincture of BlackLeaf**

*BlackLeaf Tincture is added twice daily to the pet food. It adds an extra level in the battle against the yeast overgrowth and is naturally anti-parasitic. Overall Blackleaf’s natural properties enhance and help to speed up the cleansing and recovery processes.*

**This product will be added at week 2 and is also used topically.**



**NZYMES® BacPak Plus**  
**Small & Mini Kits = 100gm Bottle**  
**Large Kit = 200gm Bottle**

*The powerful concentrate of probiotics and digestive enzymes in BacPak Plus is a key in rebuilding the natural flora of the GI tract where the yeast overgrowth resides. It assists digestion, nutrient uptake and cleansing of toxins.*

**This product will be added to the pet’s food beginning week 4.**

# Step 1: The Usage Calculator

**DURING THE CLEANSING PROCESS, THESE INSTRUCTIONS REPLACE THE USAGE AMOUNTS ON THE BOTTLES**

To get the best and quickest results, we recommend adding the products as instructed in the 'Usage Calculator' to your pet's meal twice per day. If you absolutely cannot feed your pet twice per day - please add the full daily usage amount to the meal once per day.

Click here to go to: <https://www.nzymes.com/Ref/calculator.html>

Select the Specific Usage Calculator from the Selections Below

Choose a Usage Calculator based the NZYMES Kit that was ordered or received:  
The will calculate accurate drop-count for liquids, and other usage amounts for the [Healthy-Skin Program](#).

Usage Calculator for Granules with "Large or Mini" Healthy-Skin Kit

[Click for Large Kit](#) • [Click for Mini Kit](#)



Usage Calculator for Treats with "Small" Healthy-Skin Kit

[Click Here for Small Kit](#)



**Enter the Pets's Weight in the Area Shown Below.**  
The daily usages amounts for each NZYMES product are displayed on the right.



## "NZYMES Usage Calculator for LARGE Healthy-Skin Kit with Granules"

Enter the pet's weight (in lbs.) in the gray box to complete the sheet, then PRINT for use as your daily reference. These usage guidelines **OVERRIDE** guidelines on the bottles when following the [Healthy-Skin Program](#).

Please Note: Blackleaf and BacPak Plus have delayed start dates;

<p>Enter Pet's Weight Below (Numbers Only) Press Tab or Return</p> <p>85</p> <p>Usage Amounts (Shown Right) are Based on the Pet's Weight. <b>Print Page Using Button Below.</b></p>	<p><b>Sprouted Granules - Starts Week 1</b></p> <p>1/2 Tsp. in Meal Twice Daily</p>	<p><b>Sprouted Granules - Starting Week 2 and Beyond</b></p> <p>1 Tsp. in Meal Twice Daily</p>
	<p><b>OxE-Drops - Starts Week 1 and Beyond</b></p> <p>5 Drops in Meal Twice Daily</p>	<p>"Dilute" the OxE-Drops by adding them to a teaspoon or tablespoon of water and then pour onto the pet's meal. Also add the same amount of OxE-Drops to the pet's water dish each time it is filled.</p>
	<p><b>Blackleaf - Starts Week 2 and Beyond</b></p> <p>17 Drops in Meal Twice Daily</p>	<p>Add the Blackleaf drops twice daily to the pet's meals</p>
	<p><b>BacPak Plus - Starts Week 4 and Beyond</b></p> <p>1/2 Scoop in Meal Daily</p>	<p>Add to the the first meal of the Day *Daily amount may be split into 2 meals, if preferred.</p>

## Step 2:

### Feed Correct Foods

In order to see the results you are looking for, it's important that you keep your pet on a strict diet. The diet should be more meat based and low in starchy carbohydrates. Yeast thrives on sugar – so anything that the body recognizes as sugar or converts to sugar (such as potatoes, corn, wheat, white rice, etc) will feed the problem. You DO NOT want to feed the problem while you are trying to fight it off.

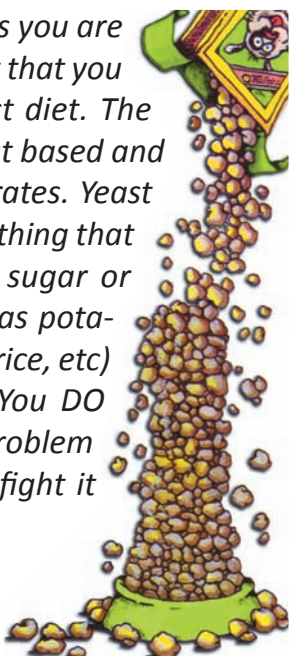
Please choose a food from the list on the Healthy Skin program page (Step #2) and transition your pet to the new food by mixing the old and new food together – increasing the new food and decreasing the old over a one to two week period. Use their store locators to find out where you can purchase it locally. If you're unable to find a store near you, go to [www.Chewy.com](http://www.Chewy.com) or consider Using Amazon Prime account to purchase it online.

**We've Spent Many Years to Develop A Quality Pet Food List - Use this Link to go to our Healthy Skin Foods.**

[Click to go to Healthy Skin Pet Foods We Recommended for this Program](#)

#### **ORGANIC COCONUT OIL SUGGESTION:**

Coconut oil is very helpful in detoxing. Add a ½ teaspoon in each feeding for pets under 60 lbs. and a full teaspoon in each feeding for pets over 60 to 150 lbs. Soften the coconut oil and dribble on the food.



## Step 3:

### Bathing Your Pet

As this cleansing process begins for your pet, it's important to keep him clean from the flaky and decaying skin cells as the yeast



continues to exit the body. We suggest using these specific shampoos during this Healthy Skin Program as they are proven.

**If NOT using Dermagic Skin Essentials;** then we suggest to bathe your pet at least 2 times per week while detoxifying and do a final rinse with Baking soda and water; Mix 2 teaspoons baking soda with 1 gal. water - Rinse pet)

### **THESE SHAMPOO PRODUCTS HAVE GIVEN THE BEST RESULTS WITH THE HS PROGRAM**

(Click these names to visit their sites)

#### **DERMAGIC Shampoo**

Use the Skin Essentials Instructions  
Print PDF 'Using with The Healthy Skin Program'

#### **MetaClean Shampoo**

Use Pet Therapeutic Soap & Shampoo

#### **Micro-Tek Shampoo**

Medicated Pet Shampoo

#### **Malaseb Shampoo**

Veterinary Shampoo

#### **Universal Medicated Shampoo**

In Canada: Canadian Medicated Shampoo



# Step 4: Using Ox-E Topical

- 1) Use Our **READY-MADE Ox-E Topical Spray Solution** OR...
- 2) Make Your Own Using **Ox-E-Drops Concentrate & Water.**



## Using Topically For the Pet's Skin

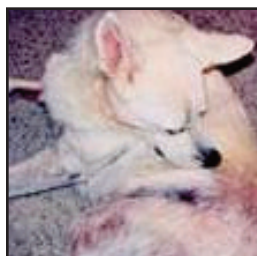
Apply the **Ox-E Topical Spray Solution** as instructed below. This will help to promote faster recovery and support healthier skin for your pet. It can also help ease inflammation, problem flare-ups and works to battle yeast release as it exits the body.

### DIRECTIONS:

**3-to 4 times daily**, use the handy spray bottle to apply a light coat of **Ox-E Topical Spray Solution** on all of the affected or problem areas. You may also apply by soaking a cotton-ball or cotton-pad and applying directly.

**APPLY AT LEAST 3-4 TIMES DAILY  
TO ALL AFFECTED AREAS!**

**NOTE:** Not following this instruction may lead to longer and more problematic recovery. **TIP:** Store the Solution in the refrigerator and use it cold as it soothes the inflammation and eases the itching.



## For the Pet's Skin

Apply a light coat of **Ox-E Topical Spray Solution** on all of the affected or problem areas. You may also apply by soaking a cotton-ball or cotton-pad and applying directly. Do this 3 to 4 times per day until the area has recovered.



## For the Pet's Ears

Saturate a cotton ball with the 2% Ox-E Topical solution, squeeze a few drops from the cotton ball into the ear canal and carefully clean the ear inside and out of the ear flap. Do this 3 to 4 times per day until the ears have recovered.



## For the Pet's Eyes

Saturate a separate cotton ball for each eye and wipe the eyes and clean away any residue. Do this 3 to 4 times per day until the eyes has recovered.

## How to Make Your Own 2% Ox-E Topical Solution



**Directions:** Starting with an 8 oz. spray bottle, add 8 Ozs. (1 cup) of Distilled or Purified water. Mix-in 1 teaspoon or (80 drops) of the **NZYMES Ox-E-Drops Concentrate**. **NOTE:** Store away from direct sunlight and keep cold in fridge if needed.

## Suggestions to Help with Itching

1. **Using Cold Compresses** is an amazing way to give your pet relief from the itchiness. We suggest to use **Cold paks, cold wash cloths or even a cold towel** to soothe the problem areas and ease the redness and inflammation over the body.
2. **Using Listerine (Gold only)** with a spray bottle on the hot spots will help to relieve the itching. If needed, dilute this with some water if your pet has open sores, as straight it will sting on open wounds. Pets tend to not want to lick it later due to smell and taste.
3. **Using Baking Soda and water** is a well known remedy that helps to ease the itching. Mix 1 full teaspoon of baking soda with 8 ounces of water apply it with a spray bottle. Or mix with a small amount of water and make a paste for more severe areas. Also used as a final rinse after bath.

# Step 5:

## Preventing Damage to Pet's Skin, Ears and Eyes

**DO NOT ALLOW** your pet to continue to create damage to their skin by chewing or scratching and rubbing the body. These suggestions will help the pet stay comfortable and avoid more damage to the skin.

### Use a Soft Collars and Body Covers to Stop Damage.

You must make sure to prevent the pet from doing face and ear damage. We prefer the use of a **SOFT COLLAR** rather than the hard plastic ones.

Protective collars can also help prevent damage the feet and legs and the rest of the body, which is common in these cases. It may take some time for your pet to get used to wearing a collar, but it is more important to avoid further damage to the skin. There are a number of new soft collar products available, but we have a good experience with the following companies.



### Comfy Cone

[www.comfycone.com](http://www.comfycone.com)

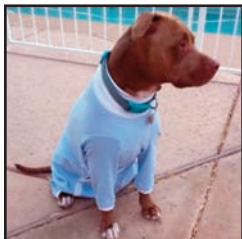


### Procollar

[www.procollars.com](http://www.procollars.com)

### We Recomend to Use Body Covers as a Way to Prevent Further Skin Damage.

- Onesies • T-shirts
- Socks • Body-wraps
- 1pc. Bathing suits



### Tulane's Closet

- Onesies

[www.tulanescloset.com](http://www.tulanescloset.com)

## What to Know, What to Expect!



The **Healthy Skin Program** is designed to help clear the pet's body of the yeast overgrowth. We have successfully resolved these issues for thousands of our customers pets and we are 100% sure we can help your as well.

Sometimes there are secondary medical issues at play such as **Low Thyroid** disease that require additional blood tests for pets with yeast overgrowth.  
For More Info Click Here

In order to bring your pet's system back to full balance and rid the body of this excess yeast; the body **MUST** go through a detoxification process. The cleanse will come in phases and the symptoms will look much worse during the initial cleansing phase. This is good thing as it is evidence that the program is working.

As the yeast overgrowth is pushed out, it's normal for the the symptoms to worsen. You can expect to see this phase for the first 2-3 months into the program.

### **THIS PROGRAM TAKES TIME.**

Depending on the severity of the condition and how many medications the pet was on prior to starting this program, **the full cleanse generally takes 3-7 months.** But some cases with older pets who have been on longterm medications or puppies with early digestive tract damage can take as long as a year to reach recovery.

So if you have ongoing problems, please call us toll free with your questions. **877.816.6500** - We will be there for you when needed.



# **Follow this Program for at Least 1 Full Year!**

***This will allow the pet to achieve a more complete digestive balance.***

*Even though many will see the symptoms subside within a few months, continuing to use the products as instructed will help finalize the cleanse and help re-balance the gastrointestinal tract – making one happy and healthy pet.*

## **Chloe the Bulldog's Recovery on the NZYMES® Healthy-Skin Program**

My dog Chloe was being seen by my family vet for years. She was diagnosed with "Allergies" about a year ago. The doctor did the classic thing and prescribed her allergy medicines. When asked what kind of allergies, the doctor did not have an answer. After six months of "Allergy medicine" at \$100.00 for 30 pills my dog was living in her own misery. I felt like a horrible dog owner. I was determined to find a solution. After research and all the positive things I have heard about Nzymes I decided to try as my dog was miserable all day. Itching, digging until she was ripping her skin open. I enclosed some photos for you.



PHOTO 1) was on June 17, the beginning of the program - PHOTO 2) Taken after 3 weeks on July 9th. By this point I was already convinced I made the right choice.  
PHOTO 3) was taken on July 21st (5 weeks) and PHOTO 4) was taken today on Sept 11, 2016 (12 weeks later). We are still following the program's guidelines. Nzymes has given me my loving dog back. She is happy and itch free. The only thing I have done was used Nzymes and NO ALLERGY medicines. My dog will be using your product from now on!

### **After The First Year:**

Remove the **Blackleaf Tincture** from the daily program and continue on a regular maintenance program with the usage amounts shown on the bottles for the **Nzymes Antioxidant Treats or Sprouted Granules, Ox-E-Drops and BacPak Plus**. For pennies a day this will help to maintain the pet's digestive system and avoid future difficulty and/or re-occurrence. Using NZYMES® daily will also help support the coat, the joints, the respiratory system and much more.

**Ask your Vet about avoiding further Vaccinations (especially rabies) as they can activate a reverse immune response and cause the old symptoms to flare-up again.**

**Ask for a Titre Blood Test Instead to Verify the Current Rabies Vaccine.**